



capcom-unity.com

REGISTER FOR EXCLUSIVE OFFERS & NEWS

REG.CAPCOM.COM

KINECT, Xbox, Xbox 360, Xbox LIVE, and the Xbox logos are trademarks of the Microsoft group of companies and are used under license from Microsoft.



⚠ WARNING Before playing this game, read the Xbox 360® console and accessory manuals for important safety and health information. Keep all manuals for future reference. For replacement console and accessory manuals, go to www.xbox.com/support.

Important Health Warning About Playing Video Games

Photosensitive seizures

A very small percentage of people may experience a seizure when exposed to certain visual images, including flashing lights or patterns that may appear in video games. Even people who have no history of seizures or epilepsy may have an undiagnosed condition that can cause these "photosensitive epileptic seizures" while watching video games.

These seizures may have a variety of symptoms, including lightheadedness, altered vision, eye or face twitching, jerking or shaking of arms or legs, disorientation, confusion, or momentary loss of awareness. Seizures may also cause loss of consciousness or convulsions that can lead to injury from falling down or striking nearby objects.

Immediately stop playing and consult a doctor if you experience any of these symptoms. Parents should watch for or ask their children about the above symptoms—children and teenagers are more likely than adults to experience these seizures. The risk of photosensitive epileptic seizures may be reduced by taking the following precautions: Sit farther from the screen; use a smaller screen; play in a well-lit room; do not play when you are drowsy or fatigued.

If you or any of your relatives have a history of seizures or epilepsy, consult a doctor before playing.

ESRB Game Ratings

The Entertainment Software Rating Board (ESRB) ratings are designed to provide consumers, especially parents, with concise, impartial guidance about the age-appropriateness and content of computer and video games. This information can help consumers make informed purchase decisions about which games they deem suitable for their children and families.

ESRB ratings have two equal parts:

- **Rating Symbols** suggest age appropriateness for the game. These symbols appear on the front of virtually every game box available for retail sale or rental in the United States and Canada.
- **Content Descriptors** indicate elements in a game that may have triggered a particular rating and/or may be of interest or concern. The descriptors appear on the back of the box next to the rating symbol.



For more information, visit www.ESRB.org.

2	PROLOGUE
4	CHARACTERS
6	CONTROLS
8	GETTING INTO THE GAME
10	ACTIONS
11	GAME SCREEN / SAVING & LOADING
12	STATUS SCREEN
13	ATTACHE CASE
13	WEAPONS DEALER
14	MAP SCREEN
14	OPTION SCREEN
15	ITEM SCREEN
15	FILE SCREEN
15	LEADERBOARDS
16	COMBAT TIPS

Xbox LIVE

Xbox LIVE® is your connection to more games, more entertainment, more fun. Go to www.xbox.com/live to learn more.

Connecting

Before you can use Xbox LIVE, connect your Xbox 360 console to a high-speed Internet connection and sign up to become an Xbox LIVE member.

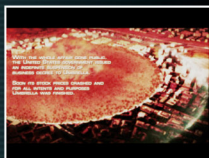
For more information about connecting, and to determine whether Xbox LIVE is available in your region, go to www.xbox.com/live/countries.

Family Settings

These easy and flexible tools enable parents and caregivers to decide which games young game players can access based on the content rating. Parents can restrict access to mature-rated content. Approve who and how your family interacts with others online with the Xbox LIVE service, and set time limits on how long they can play. For more information, go to www.xbox.com/familysettings.



Several years have passed
since the destruction
of Raccoon City...



U
N
I
O
N
S



Leon
S.
Kennedy



ARE THEY HUMAN?

A CURSE THAT PLAGUES THE HUMAN BODY

CREATURES THAT DEFY GOD'S CREATION

A MYSTERIOUS VILLAGE



resident evil



resident evil™

CHARACTERS

Great...



Leon S. Kennedy

Agent for the U.S. Government. He has been sent to Europe on a solo mission to rescue the President's kidnapped daughter, Ashley. Leon is one of the few people who survived the destruction of Raccoon City six years ago.



... but now I'm just a good-for-nothing guy who happens to be quite the lady's man.



Luis Sera

Luis says he's a former cop, like Leon. Though there is more to this mysterious Spaniard than meets the eye. There's even information that says his grandfather once lived in the area.

Leon, it's dangerous!



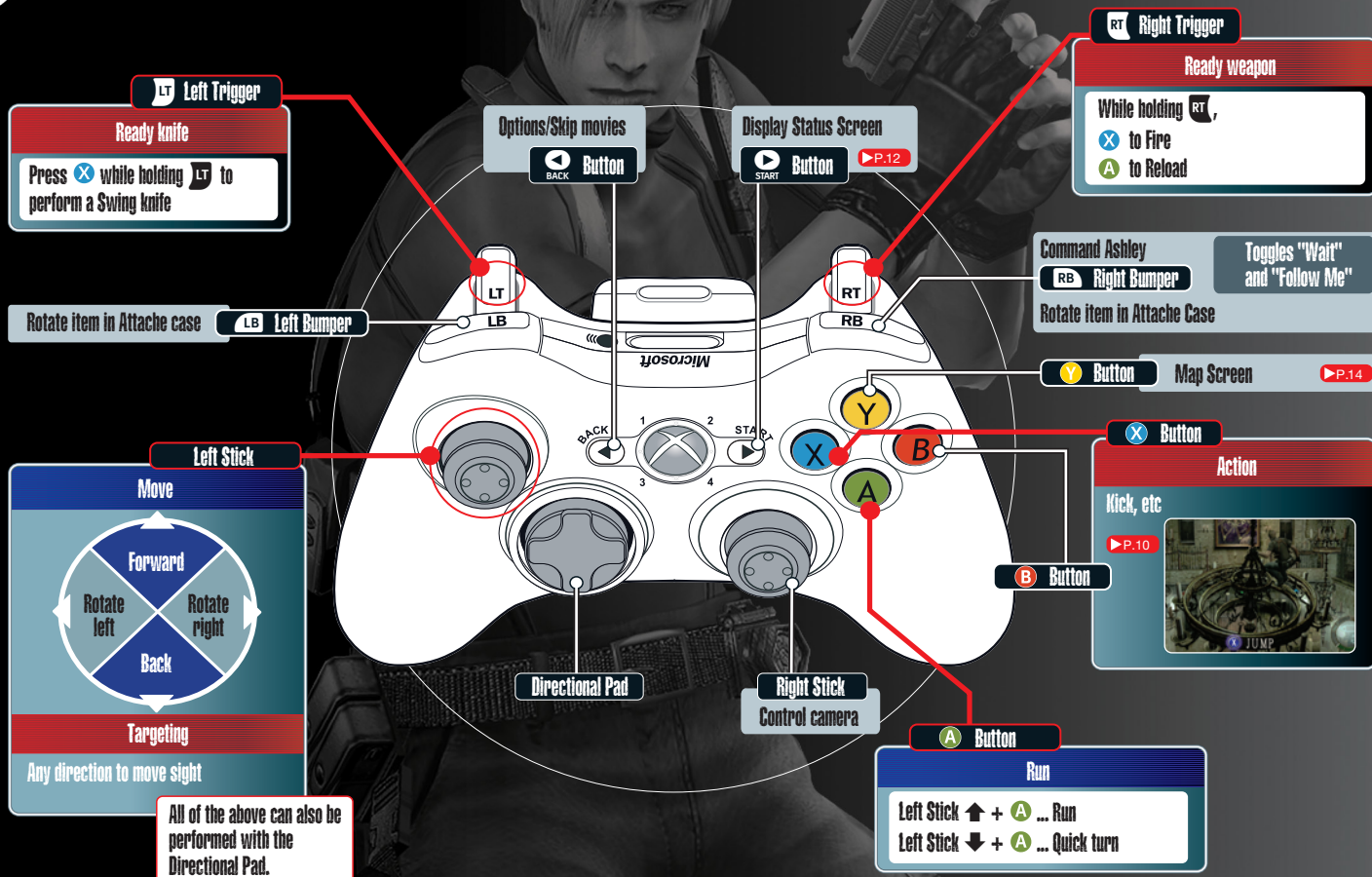
Ashley Graham

Daughter of the President of the United States. She was kidnapped by a mysterious group on the way home from her college in Massachusetts. Allegedly she has been spotted in a village in Europe, but there has been no sign of her since!



resident evil™

CONTROLS



Controls

This is the default controls configuration.
Key Binding may be changed in the Options.

X Button / A Button Confirm **B Button** Cancel

N.B. This software is compatible with vibration function. Toggle on/off in the Options. ▶P.14

resident evil™

GETTING INTO THE GAME

Press the Directional Pad or Left Stick to select the item and then press the **A** Button to confirm.



STARTING A GAME

NEW GAME

Start a new game from the beginning. Select the difficulty level.

LOAD

Load your saved progress and continue your game. Selecting the last saved file (page 11) lets you resume the game from where you left off.

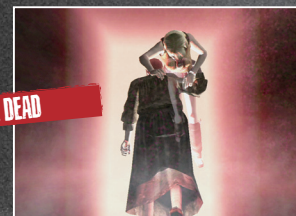
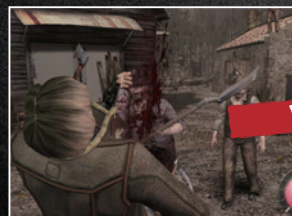
LEADERBOARDS

Check out other players' ranking (page 15).

HELP & OPTIONS

Change various game settings (page 14). You can apply game settings here, as well as view "HOW TO PLAY" for a quick tutorial of the game.

GAME OVER



Getting attacked by enemies and falling into enemy traps depletes your Health. When the Health reaches zero, your game is over. You will also end the game by failing to complete your mission requirements.

CONTINUE

Even if your game is over, you can choose to continue the same game. To do that, select YES on the Continue screen.



ACHIEVEMENTS

Fulfilling certain criteria may unlock Achievements. When this happens a pop up message and a notification sound is played.

resident evil™

ACTIONS

AIM AND FIRE



Hold **RT**, use Left Stick to aim and press to fire.

Use your weapon's laser sight.



Hold **RT** + **A**

Reload.
Reload time varies by weapon.

KNIFE ATTACK



Hold **RT** + **X**

Slash with a knife, regardless of your equipped weapon.

ACTION BUTTON



Aim at an enemy's head and fire!



Get close and... **X**



Kick!

When you see the Action button hint...

Quick turn

Left Stick **↓** + **A**

Press **A** while walking back to do an "about face".



GAME SCREEN/SAVING & LOADING

GAME SCREEN



PLAYER

JUMP OUT

ACTION BUTTON HINT

REMAINING AMMO

When you run out of ammo, the Remaining Ammo indicator reads **EMPTY**. If this happens you need to switch to another weapon.



YOUR HEALTH

Once Ashley joins you, her Health appears along with yours.

SAVING YOUR PROGRESS

Use typewriters you'll find in each stage to save your progress.



This game requires at least 2MB space in order to save game data.

Please do not turn off your console while saving or loading the data. If you overwrite save data, the old data will be lost. Please note that up to 20 game saves can be stored.

LOADING SAVED DATA

You can load saved game data by selecting **LOAD** on the Mode Select screen. You can also load mid-game by selecting **LOAD GAME** from the Pause/Option screen (page 14).



resident evil™

STATUS SCREEN

Press the **START** Button to open the status screen

Here you can:

- Equip weapons, and combine weapon parts to enhance existing weapons.
- Use recovery items or combine herbs and other items.
- Organise items in your Attaché Case.

COMMAND



CURRENCY

NAME OF SELECTED ITEM

EQUIPPING/USING ITEMS

- ① Highlight an item to equip or use and press the **X** Button to display commands.
- ② Select **EQUIP** or **USE** to perform that command.

COMBINING ITEMS

By combining related items, you can free up space in your Inventory and even power up your weapons.
Example - Combining herbs:

- ① Press the **Y** Button to select the herb you wish to combine it with.
- ② Pick up the herb, place it on top of the herb you wish to combine it with and press the **Y** Button.
- ③ Done!



This can be done through 'Combine' in the command menu.

ATTACHE CASE

Press **Y** in the Status Screen

ORGANISING ITEMS IN YOUR ATTACHE CASE

- ① Highlight the item you want to move, then press the **Y** Button.
- ② Move the cursor to an empty space.
- ③ Press the **Y** Button, **X** or **A** Button to complete the move.

Press **LB** or **RB** to rotate the selected item



You can only pick up items if there is free space in your Attaché Case. Manage your items and space so you're always carrying the most important items for the tasks ahead.

TEMPORARY SPACE



If you pick up an item and don't have enough space to carry it, it will be placed in the Temporary Space. Rearrange your items to create enough space for it. Items left in the Temporary Space will be discarded.

WEAPONS DEALER

Talk to the Weapons Dealer to buy and sell items. Here you can:



- BUY** Purchase weapons and parts.
- TUNE UP** Increase the firepower, firing speed, capacity and reload speed of your current weapons.
- SELL** Trade in jewels and other treasures for money.

NOTE: If you don't have enough space in your Attaché Case, you may not be able to make purchases.

MAP SCREEN

Select MAP from the Status Screen, or press the **Y** Button in-game for quick access to the Map.

MAP NAME

DESTINATION



CURRENT LOCATION

MARKERS

Select the item you want to see and it will appear on the Map, showing you its location.



OPTION SCREEN

BACK Button

Select Options from the Mode Select screen, or press the **BACK** Button in-game to open the Pause/Options menu. You can change game settings on this screen.

- **RETRY or LOAD** — Resume a game from your last save point. (Available in-game only.)
- **CONTROLLER SETUP** — Change your controller settings.
- **BRIGHTNESS ADJUST** — Adjust the brightness of the screen.
- **SCREEN SETTINGS** — Adjust your screen settings.

NOTE: Be sure to read the screen hints for further information when changing settings.

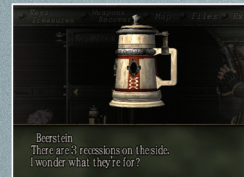
ITEM SCREEN

- Highlight either the Key item or Treasure item and press the **A** Button to display the list of commands.
- Select your command and press the **A** Button.

KEY ITEM



TREASURE ITEM



Combining certain Treasure items together increase the value.

FILE SCREEN

View Files acquired during the game.



LEADERBOARDS

When signed in to Xbox LIVE, select LEADERBOARDS from the title screen. You can check out your friends or other players' rankings. Your own data will be sent to the LEADERBOARDS when you clear the game. See information on Xbox LIVE on page 1.

LEADERBOARDS - New Game only		
Main Game		
NORMAL		
RANK	GHARTAG	TIME
1	CAFCOM 01	2:10:00
2	CAFCOM 02	2:10:00
3	CAFCOM 03	2:10:00
4	CAFCOM 04	2:10:00
5	CAFCOM 05	2:10:00
6	CAFCOM 06	2:10:00
7	CAFCOM 07	2:10:00
8	CAFCOM 08	2:10:00
9	CAFCOM 09	2:10:00
10	CAFCOM 10	2:10:00



COMBAT TIPS

AIM AT THEIR FEET

- Enemies go down easier when you aim at their feet.
- Press the Action Button at just the right moment, and enemies in the area will be blown away.

SHOOTING DOORS

- Shoot out doors to get to enemies!
- Some wooden doors and boarded-up walls can be shot out to get to enemies on the other side, or to make new routes.



VULNERABLE OBJECTS



- Sharpshoot red drum cans and barrels to blow them up, take out surrounding enemies and inflict more damage!

NEW GAME MODES

Secret Feature

Additionally, after you've completed the main adventure, you can access new game modes from the EXTRAS option.